

## Restoration Lime Kent

*Restoration Lime Kent*

### Ancillary Products

**All Product Prices shown are excluding VAT**

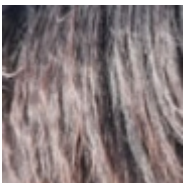
N.B. For smaller orders, Items are dispatched on a Friday - Delivery between 2-3 days after.



#### **Arglical M-100 Pozzolanic additive**

This is a clay based product, acting as a Pozzolanic material.

**5 kg Tub Â£8.10 +VAT 20kg Bag Â£19.95 +VAT** [\[For more Product Details and to Purchase Click Here...\]](#)



#### **Hair**

Our horse hair when added to slaked lime or NHL products increases flexibility and reduces cracking. Useful on walls that are prone to movement and a necessity for lath and plaster walls and ceiling.

**1kg of Animal Hair Â£10.00 +VAT** [\[For more Product Details and to Purchase Click Here...\]](#)



### Lath Riven Chestnut

Chestnut Riven Laths are known for their strength and flexibility and give an excellent key. These are usually required on listed buildings. Renewable sustainable source.

**1 bundle of 50 x 4ft Riven Laths (200 linear ft) Â£64.00 +VAT** [\[For more Product Details and to Purchase Click Here...\]](#)



### Lath Sawn Larch

Specifically for projects which require a longer alternative. Renewable sustainable sources.

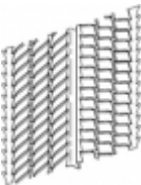
**1 bundle of 50 x 8ft or 100 x 4ft Sawn Larch Laths (400 linear ft) Â£40.00 +VAT** [\[For more Product Details and to Purchase Click Here...\]](#)



### Lath Sawn Oak

A hard wood alternative to Chestnut and Larch, produced from renewable, sustainable sources.

**1 bundle of 50 x 8ft Sawn Oak Laths (400 linear ft) Â£48.00 +VAT** [\[For more Product Details and to Purchase Click Here...\]](#)



### Stainless Steele Type 267 Expanded Metal Riblath

Quick to fit, useful rigid backing for Mortars on to timber frames etc.

**2500mm x 600mm sheet, o.30mm thick with rib depth of 8mm Â£25.00 +VAT** [\[For more Product Details and to Purchase Click Here...\]](#)



## Stainless Steele Type 95s Expanded Metal Mesh

A good flexible non corrosive mesh ideal for making arches curves stair winders etc. Also useful to stabilise live walls.

**2500mm x 700mm sheet, 0.46mm thick with 9.2 x 28.6mm size holes Â£25.00 +VAT** [\[For more Product Details and to Purchase Click Here...\]](#)

- «« Start
- « Prev
- 1
- Next »
- End »»

Results 1 - 7 of 7